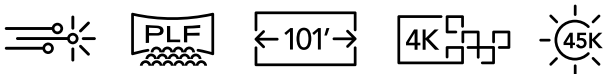


## CP4440-RGB

Premium large format auditoriums | Advanced format cinema | Event cinema

World's first advanced format cinema projector featuring Christie ReaLaser™ technology for screens up to 101 feet wide



### Key features:

- › **Hyper realism** – new system architecture that displays content without motion blur and artifacts
- › **Ultra-fast processing** – HDMI 2.0 and 4x 12GB SDI inputs for 1.06G pixels per sec
- › **Low maintenance** – sealed optics for protection against dust ingress
- › **Enhanced Wavelength Diversity (EWD)** – utilising MPD technology to improve image quality on all screen types
- › **Long-lasting light source** – over 50,000 hours of optimal performance
- › **Best-in-class operational efficiency** – 8.9 lumens per watt

CHRISTIE  
ReaLaser™

Advanced laser light source for accurate reproduction of DCI content

CineLife+™

Adds ultra high frame rate providing each eye 2K 120fps, 4K 120fps, 4K 3D 60fps

### TEMPERATURE CONTROL

External liquid cooling for optimal thermal efficiency



## Specifications Christie CP4440-RGB

<b>Brightness</b>	nominal	• Up to 45,000 lumens with HB lens, 35,000 lumens with UHC lens at DCI white (<25°C ambient) <sup>1</sup>
	lifetime	• >50,000 hours <sup>2</sup>
<b>Contrast ratio</b>		• Up to 6000:1 sequential with UHC lens, 2000:1 with standard HB lens
<b>Digital micromirror device</b>		• 1.38" Enhanced 4K 3-chip DMD DLP Cinema® • 4096x2160 (4K)
<b>Color gamut</b>	native gamut	• >95% Rec 2020 coverage
<b>Processing electronics</b>		• Christie® CineLife+™ Series (Series-2 IMB compatible) <sup>3</sup> • HDMI 2.0 x2 • 4K120 fps <sup>4</sup> • 1G Ethernet x1 • 12G SDI x 4 • DisplayPort 1.2 x2 • SFP+ x1 • QSFP+ x 1
<b>Lens mount configuration</b>		• Fully motorized Intelligent Lens System (ILS™)
<b>Lenses</b>		• HB and UHC: 0.9:1 (HB) / 1.13-1.66 / 1.31-1.85 / 1.45-2.17 / 1.63-2.71 / 1.95-3.26 / 2.71-3.89
<b>Power input requirements</b>		• Input A and Input B: 200-240 VAC @ 50-60Hz, 16A max • UPS Input: 200-240 VAC @ 50-60Hz, Single phase, 10A max • Chiller: 200-240 VAC @ 50-60Hz, 20A max
<b>Power consumption</b>		• 5300W including chiller, max DCI brightness, @25°C 18,085 BTU/hr
<b>Heat Extraction</b>		• No heat extraction necessary. CFM requirements when used: • Projector 350 CFM min • Chiller 1340 CFM min
<b>Laser class</b>		• Class 1 – Risk Group 3
<b>Noise level</b>		• <70 dBA @ 25°C
<b>Environment</b>		• Ambient temperature: 15-30°C • Humidity (non-condensing): 20-80% • Altitude: <3000 m
<b>Dimensions (w/o lens)</b>	size (LxWxH)	• Projector head: 61.1x28.0x22.0" (1551.1x710.6x559.6mm) • Projector pedestal: 53.9x29.8x29.1" (1369.8x756.0x739.4mm)
<b>Weight</b>		• Projector head: 385lbs (175kg)
<b>Chiller dimensions</b>		• (LxWxH): 26.38x18.5x35.0" (670x470x890mm); 202lbs (92kg) • Chiller hose: 33ft (10m)
<b>Accessories</b>		• Rack mount pedestal • 50Hz chiller • 60Hz chiller • Chiller setup kit plumbing • Coolant <sup>5</sup> • Chiller setup kit ducts

<sup>1</sup> With Enhanced Wavelength Diversity (EWD).

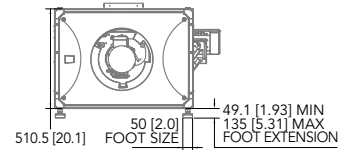
<sup>2</sup> Subject to variables specific to each installation. Please see Christie's laser best practices guide for more information.

<sup>3</sup> Supports legacy Series 2 IMBs. A list of supported versions is available upon request.

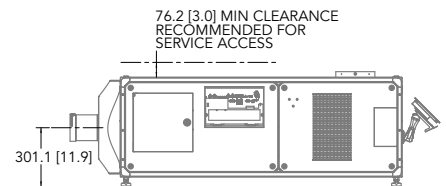
<sup>4</sup> With the GDC SR-6400 IMB.

<sup>5</sup> 10L bottle of 702 coolant. Requires 3 bottles per projector.

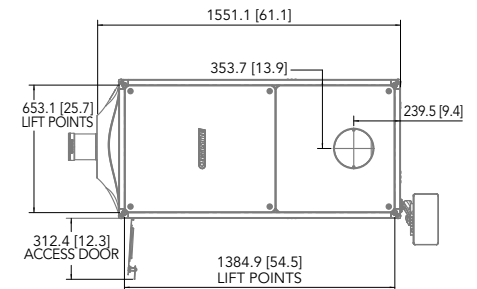
## Front view



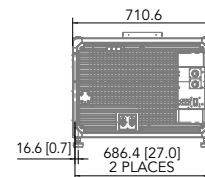
## Side view



## Top view



## Back view



### Corporate offices

Christie Digital Systems USA, Inc.  
Cypress  
ph: 714 236 8610

Christie Digital Systems Canada Inc.  
Kitchener  
ph: 519 744 8005

### Worldwide offices

Australia  
ph: +61 (0) 7 3624 4888

Brazil  
ph: +55 (11) 2548 4753

China (Beijing)  
ph: +86 10 6561 0240

China (Shanghai)  
ph: +86 21 6030 0500

Colombia  
ph: +57 (318) 477-3179

Eastern Europe  
ph: +36 (0)1 47 48 138

France  
ph: +33 (0) 1 41 21 44 04

Germany  
ph: +49 221 99 512-0

India  
ph: +91 (080) 6708 9999

Mexico  
ph: +52 55 4744 1790

Singapore  
ph: +65 6877 8790

South Korea  
ph: +82 2 702 1601

Spain  
ph: +34 91 633 9990

United Arab Emirates  
ph: +971 (0) 4 503 6800

United Kingdom  
ph: +44 (0) 118 977 8000

United States (Arizona)  
ph: 602 943 5700

### Independent sales consultant offices

Italy  
ph: +39 (0) 2 9902 1161

Russia  
ph: +7 (495) 930 8961

For the most current specification information, please visit [christiedigital.com](http://christiedigital.com)

Copyright 2020 Christie Digital Systems USA, Inc. All rights reserved. All brand names and product names are trademarks, registered trademarks or tradenames of their respective holders. Performance specifications are typical. Due to constant research, specifications are subject to change without notice.  
CINE0082-CP4440-RGB-Datasheet-Jan-20-EN-US

